

GPR24 Antibody (monoclonal) (M01)**Mouse monoclonal antibody raised against a partial recombinant GPR24.****Catalog # AT2247a****Specification**

GPR24 Antibody (monoclonal) (M01) - Product Information

Application	WB, E
Primary Accession	Q99705
Other Accession	BC001736
Reactivity	Human
Host	mouse
Clonality	Monoclonal
Isotype	IgG2a Kappa
Calculated MW	38940

GPR24 Antibody (monoclonal) (M01) - Additional Information**Gene ID** 2847**Other Names**

Melanin-concentrating hormone receptor 1, MCH receptor 1, MCH-R1, MCHR-1, G-protein coupled receptor 24, MCH-1R, MCH1R, MCHR, SLC-1, Somatostatin receptor-like protein, MCHR1, GPR24, SLC1

Target/Specificity

GPR24 (AAH01736, 14 a.a. ~ 113 a.a) partial recombinant protein with GST tag. MW of the GST tag alone is 26 KDa.

Dilution

WB~~1:500~1000

E~~N/A

Format

Clear, colorless solution in phosphate buffered saline, pH 7.2 .

Storage

Store at -20°C or lower. Aliquot to avoid repeated freezing and thawing.

Precautions

GPR24 Antibody (monoclonal) (M01) is for research use only and not for use in diagnostic or therapeutic procedures.

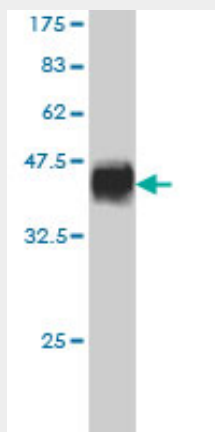
GPR24 Antibody (monoclonal) (M01) - Protocols

Provided below are standard protocols that you may find useful for product applications.

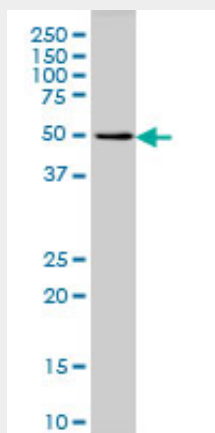
- [Western Blot](#)

- [Blocking Peptides](#)
- [Dot Blot](#)
- [Immunohistochemistry](#)
- [Immunofluorescence](#)
- [Immunoprecipitation](#)
- [Flow Cytometry](#)
- [Cell Culture](#)

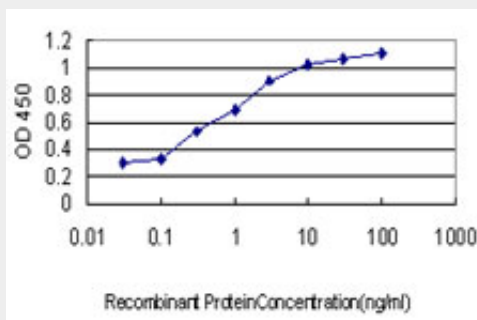
GPR24 Antibody (monoclonal) (M01) - Images



Antibody Reactive Against Recombinant Protein. Western Blot detection against Immunogen (36.74 kDa) .



GPR24 monoclonal antibody (M01), clone 3D7 Western Blot analysis of GPR24 expression in HL-60 ((Cat # AT2247a)



Detection limit for recombinant GST tagged GPR24 is approximately 0.03ng/ml as a capture antibody.

GPR24 Antibody (monoclonal) (M01) - Background

The protein encoded by this gene, a member of the G protein-coupled receptor family 1, is an integral plasma membrane protein which binds melanin-concentrating hormone. The encoded protein can inhibit cAMP accumulation and stimulate intracellular calcium flux, and is probably involved in the neuronal regulation of food consumption. Although structurally similar to somatostatin receptors, this protein does not seem to bind somatostatin.

GPR24 Antibody (monoclonal) (M01) - References

Functional interaction of regulator of G protein signaling-2 with melanin-concentrating hormone receptor 1. Miyamoto-Matsubara M, et al. Ann N Y Acad Sci, 2010 Jul. PMID 20633139. Two complex genotypes relevant to the kynurenine pathway and melanotropin function show association with schizophrenia and bipolar disorder. Miller CL, et al. Schizophr Res, 2009 Sep. PMID 19502010. High-density association study of 383 candidate genes for volumetric BMD at the femoral neck and lumbar spine among older men. Yerges LM, et al. J Bone Miner Res, 2009 Dec. PMID 19453261. Mapping of melanin-concentrating hormone receptor 1 B cell epitopes predicts two major binding sites for vitiligo patient autoantibodies. Gavalas NG, et al. Exp Dermatol, 2009 May. PMID 19320743. A common variant in DRD3 receptor is associated with autism spectrum disorder. de Krom M, et al. Biol Psychiatry, 2009 Apr 1. PMID 19058789.